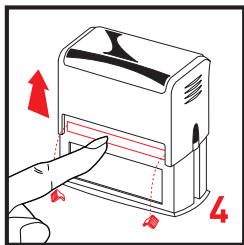
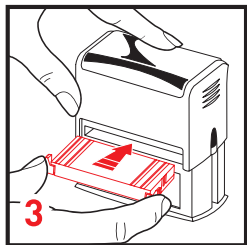
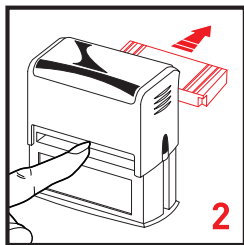
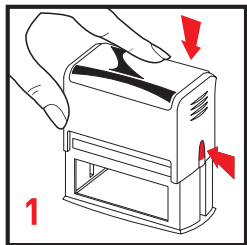


How to replace your ink pad



1. Press stamp downward while pressing side lock buttons until handle clicks into place.
2. Push the old ink pad out of the stamp using your index finger.
3. Using the grip tabs, slide the new ink pad in with foam side facing down.
4. Push the new ink pad in until the grip tabs pop off and it clicks into place. Depress the handle to release the side lock buttons. Your stamp is now ready to use!